



JUBAILI BROS



CUSTOMIZED SOLUTIONS



2000+ GENERATING SETS, ENGINES AND ALTERNATORS IN STOCK



2500 SQ. METERS DEDICATED AREA FOR PARTS STORAGE



HIGHLY TRAINED ENGINEERS & TECHNICIANS

YOUR PARTNER IN POWER

Jubaili Bros is ISO 9001 Certified







UAE HEADQUARTER

## ABOUT US

Jubaili Bros, a leading supplier of power solutions, serves its customers throughout the Middle East, Africa and Asia. One key factor that sets Jubaili Bros apart from other providers is the company's dedication to customer satisfaction, backed with 40 years of experience in the electromechanical field.

## TIMELINE

### LEBANON



**1977**  
Jubaili Bros was established in the city of Sidon (Saida) Lebanon as a provider of electromechanical solutions.

### UAE



**1991**  
First International branch in UAE was opened to cover the GCC market.

### NIGERIA



**1996**  
Jubaili Bros was established in Nigeria where it successfully met the challenge of satisfying the high market demand.

### AFGHANISTAN



**2002**  
Jubaili Bros started its operations in Afghanistan market by establishing a branch in Kabul and holding trade license No. 1.

### KUWAIT



**2004**  
Expanded into Kuwait and Southern Iraq with a branch at Kuwait Free Trade Zone.



**JUBAILI BROS**

To-date, Jubaili Bros with 27 branches and service centers in 9 countries is one of the leading providers of power solutions in the Middle East, Africa and Asia.

### SOUTH AFRICA



**2016**  
To offer its world class power solutions to South Africa and neighboring countries, Jubaili Bros launched a new branch in Johannesburg.

### UGANDA



**2013**  
To further strengthen its presence in Africa and to provide after sales service to clients (especially telecom companies), Jubaili Bros opened a new branch in Kampala-Uganda to serve the East African market.

### QATAR



**2011**  
Began operations in Qatar by supplying world class power solutions through its newly opened branch in Doha.

### GHANA

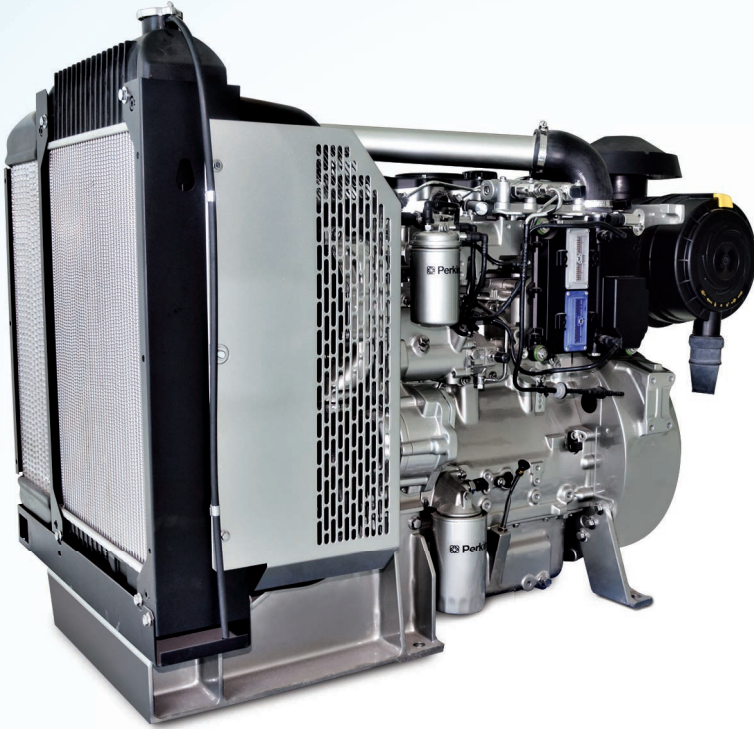


**2010**  
Jubaili Bros extended its global reach throughout Africa with an additional branch in Ghana that caters to WECA market.

 Perkins®

Diesel Power

## JET & MARAPCO BRAND DIESEL GENERATOR SETS ARE POWERED BY PERKINS ENGINES



Perkins is a world leader in the innovation, design and production of a wide range of state - of - the - art Engines, manufactured at various plants in the United Kingdom. Perkins Engines are known the world over for their fuel - efficiency, ruggedness and reliable operation under all conditions.

**WE CONTINUE TO OFFER COMPLETE POWER SOLUTIONS  
TO OUR VALUED CUSTOMERS THROUGH WELL KNOWN  
AND TRUSTED BRANDS.**

**Jet**<sup>®</sup>  
Generators

**Marapco**<sup>®</sup>

 Perkins®  
Diesel Power

**mtu** **onsite**  
energy

**LEROY**<sup>®</sup>  
**SOMER**

**DSE**<sup>®</sup>

**ABB**



**Jet**<sup>®</sup>  
**Generators**

ASSEMBLED BY JUBAILI BROS

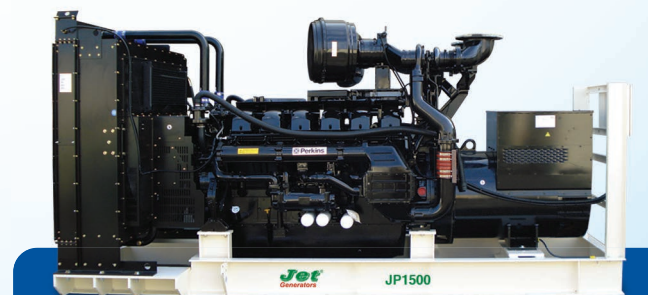
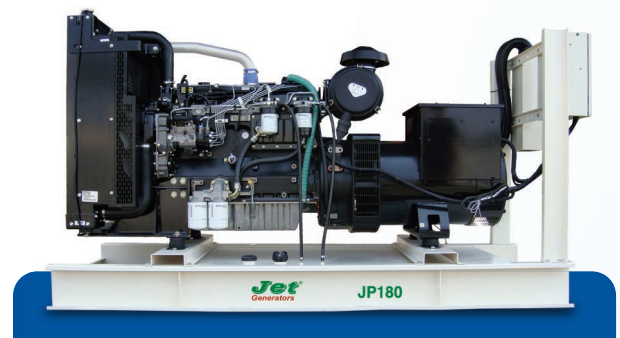
**50HZ & 60HZ**

9 KVA - 2500 KVA

Jubaili Bros offers a wide range of JET Brand Diesel Generators – Assembled in Lebanon & UAE, powered by Perkins engines and coupled with Leroy-Somer alternators, ranging up to 2500 KVA. JET generating sets offer superior quality at reasonable cost, catering to a wide range of Jubaili Bros' clients all across the globe.

Jet Diesel Generators are covered with one year warranty against manufacturing defects, which is in line with manufacturer's warranty terms and conditions.

Jet Diesel Generators meets the following standards: BS4999, BS5000, ISO3046, IEC 60034, NEMA MG 1.22 and ISO 8528.



 **Perkins**<sup>®</sup>

POWERED BY

**Diesel Power**





## Generating Set Ratings: Up to 2500 KVA

### Perkins Powered - 3 Phase, 380 - 415 V, 50 Hz, Rating at 0.8 PF

Generating Set	Perkins Engine Model	Leroy Somer Alternator Model	RPM	Rating			
				KVA		KW	
				Prime	Standby	Prime	Standby
JP9	403A-11G1	LSA40VS2	1500	9.0	10.0	7.2	8.0
JP12.5	403A-15G1 / 403D-15G1	TAL040C / LSA40VS2	1500	12.5	14.0	10.0	11.2
JP15	403A-15G2	TAL040D / LSA40S3	1500	15.0	16.5	12.0	13.2
JP20	404A-22G1 / 404D-22G1	TAL040F / LSA40M5	1500	20.0	22.0	16.0	17.6
JP30	1103A-33G	TAL042C / LSA42.3VS3	1500	30.0	33.0	24.0	26.4
JP45	1103A-33TG1	TAL042F / LSA42.3M7	1500	45.0	50.0	36.0	40.0
JP60	1103A-33TG2	TAL042H / LSA42.3L9	1500	60.0	66.0	48.0	52.8
JP80	1104A-44TG2	TAL044B / LSA44.3S3	1500	80.0	88.0	64.0	70.4
JP100	1104C-44TAG2	TAL044D / LSA44.3S5	1500	100.0	110.0	80.0	88.0
JP135	1106A-70TG1	TAL044H / LSA44.3M8	1500	135.0	150.0	108.0	120.0
JP150	1106A-70TAG2	TAL044J / LSA44.3L10	1500	150.0	165.0	120.0	132.0
JP180	1106A-70TAG3	TAL046A / LSA46.2M3	1500	180.0	200.0	144.0	160.0
JP200	1106A-70TAG4	TAL046B / LSA46.2M5 / LSA46.3S3	1500	200.0	220.0	160.0	176.0
JP200	1506A-E88TAG1	TAL046B / LSA46.2M5 / LSA46.3S3	1500	200.0	220.0	160.0	176.0
JP230	1506A-E88TAG2	TAL046C / LSA46.2L6 / LSA46.3S4	1500	230.0	250.0	184.0	200.0
JP250	1506A-E88TAG3	TAL046D / LSA46.2L6 / LSA46.3S5	1500	250.0	275.0	200.0	220.0
JP275	1506A-E88TAG4	TAL046E / LSA46.2L9 / LSA46.3M7	1500	275.0	300.0	220.0	240.0
JP300	1506A-E88TAG5	TAL046F / LSA46.2VL12 / LSA46.3M8	1500	300.0	330.0	240.0	264.0
JP350	2206A-E13TAG2	TAL046H / LSA47.2VS2 / LSA46.3L11	1500	350.0	400.0	280.0	320.0
JP400	2206A-E13TAG3	TAL047A / LSA47.2S4	1500	400.0	450.0	320.0	360.0
JP450	2506A-E15TAG1	TAL047B / LSA47.2S5	1500	450.0	500.0	360.0	400.0
JP500	2506A-E15TAG2	TAL047C / LSA47.2M7	1500	500.0	550.0	400.0	440.0
JP600	2806A-E18TAG1A	TAL047E / LSA47.2L9	1500	600.0	660.0	480.0	528.0
JP650	2806A-E18TAG2	TAL047F / LSA49.1S4 / LSA49.3S4	1500	650.0	700.0	520.0	560.0
JP750	4006-23TAG2A	TAL049C / LSA49.1M75 / LSA49.3M8	1500	750.0	825.0	600.0	660.0
JP800	4006-23TAG3A	TAL049C / LSA49.1M75 / LSA49.3M8	1500	800.0	880.0	640.0	704.0
JP1000	4008TAG2A	TAL049E / LSA49.1L11 / LSA49.3L10	1500	1000.0	1100.0	800.0	880.0
JP1100	4008 - 30TAG3	LSA50.2M6	1500	1125.0	1250.0	900.0	1000.0
JP1250	4012-46TWG2A	LSA50.2M6	1500	1250.0	1375.0	1000.0	1100.0
JP1350	4012-46TAG1A	LSA50.2L7	1500	1350.0	1500.0	1080.0	1200.0
JP1500	4012-46TAG2A	LSA50.2L8	1500	1500.0	1650.0	1200.0	1320.0
JP1700	4012-46TAG3A	LSA51.2S55 / LSA52.3S5	1500	1710.0	1880.0	1368.0	1504.0
JP2000	4016TAG2A	LSA51.2M60 / LSA52.3S6	1500	2000.0	2250.0	1600.0	1800.0
JP2250	4016-61TRG3	LSA51.2VL90 / LSA52.3L9	1500	2250.0	2500.0	1800.0	2000.0

#### Standard Control Panel:

9 KVA up to 650 KVA - Deep Sea 6110

750 KVA up to 2500 KVA - Deep Sea 7320

\*Customized Solutions are also available

#### Rating Definitions:

**Prime:** These ratings are applicable for supplying continuous electrical power (at variable load) in lieu of commercially purchased power. 10% overload power is available for 1 hour in 12 hours continuous operation.

**Standby:** These ratings are applicable for supplying continuous electrical power (at variable load) in the event of a utility power failure. No overload is permitted on these ratings.

**Note:** All ratings @ Factory Standard Conditions.

#### Others

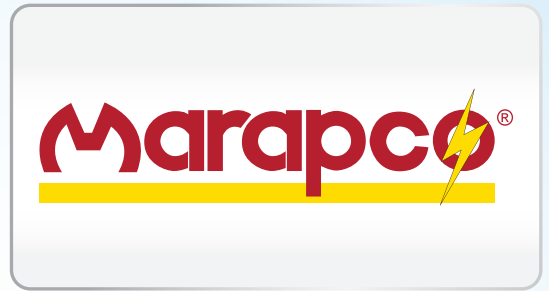
**Sound Attenuated Enclosures:** Developed by our special acoustic engineers and comply with the European Community regulations 2000/14/EC.

The fully weatherproof enclosures are extremely rugged to withstand the rough handling common on many construction sites.

**Control Panels:** Digital & Auto Synchronization Panels.

**Automatic Load Transfer Panels:** Electronically controlled panel provides 24 hours automatic control of standby generating sets, 365 days a year.

Specifications are subject to change without prior notice



## 50HZ & 60HZ

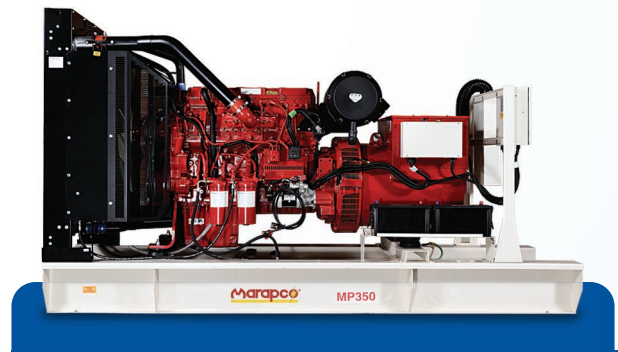
12.5 KVA - 2500 KVA

Marapco Generating Sets have provided reliable, dependable and trustworthy power solutions for the global market since 1994. These Generating Sets are designed & manufactured in the UK ranging from 12.5 up to 2500 KVA and combine quality and performance to deliver a superior product.

Marapco Diesel Generators are covered with one year warranty against manufacturing defects, which is in line with manufacturer's warranty terms and conditions.

Marapco Diesel Generators meets the following standards: ISO8528, BS4999, ISO3046, BS60034, ISO12100, BS60439, BS953:1997+A1

MADE IN UK



POWERED BY

## Marapco Generating Set Ratings Summary: 12.5 - 2500 KVA

Perkins Powered - 3 Phase, 380 - 415 V. 50 Hz, Rating at 0.8 PF

Generating Set	Perkins Engine Model	Leroy Somer Alternator Model	RPM	Rating			
				KVA		KW	
				Prime	Standby	Prime	Standby
MP12.5-MP14E	403A-15G1	LSA40VS2	1500	12.5	14.0	10.0	11.2
MP15-MP16.5E	403A-15G2	LSA40S3	1500	15.0	16.5	12.0	13.2
MP20-MP22E	404A-22G1 / 404D-22G1	LSA40M5	1500	20.0	22.0	16.0	17.6
MP30-MP33E	1103A-33G	LSA42.3VS3	1500	30.0	33.0	24.0	26.4
MP45-MP50E	1103A-33TG1	LSA42.3M7	1500	45.0	50.0	36.0	40.0
MP60-MP66E	1103A-33TG2	LSA42.3L9	1500	60.0	66.0	48.0	52.8
MP80-MP88E	1104A-44TG2	LSA44.3S3	1500	80.0	88.0	64.0	70.4
MP100-MP110E	1104C-44TAG2	LSA44.3S5	1500	100.0	110.0	80.0	88.0
MP135-MP150E	1106A-70TG1	LSA44.3M8	1500	135.0	150.0	108.0	120.0
MP150-MP165E	1106A-70TAG2	LSA44.3L10	1500	150.0	165.0	120.0	132.0
MP180-MP200E	1106A-70TAG3	LSA46.2M3	1500	180.0	200.0	144.0	160.0
MP200-MP220E	1106A-70TAG4	LSA46.2M5 / LSA46.3S3	1500	200.0	220.0	160.0	176.0
MP200-MP220E	1506A-E88TAG1	LSA46.2M5 / LSA46.3S3	1500	200.0	220.0	160.0	176.0
MP230-MP250E	1506A-E88TAG2	LSA46.2L6 / LSA46.3S4	1500	230.0	250.0	184.0	200.0
MP250-MP275E	1506A-E88TAG3	LSA46.2L6 / LSA46.3S5	1500	250.0	275.0	200.0	220.0
MP275-MP300E	1506A-E88TAG4	LSA46.2L9 / LSA46.3M7	1500	275.0	300.0	220.0	240.0
MP300-MP330E	1506A-E88TAG5	LSA46.2VL12 / LSA46.3M8	1500	300.0	330.0	240.0	264.0
MP350-MP400E	2206A-E13TAG2	LSA47.2VS2 / LSA46.3L11	1500	350.0	400.0	280.0	320.0
MP400-MP450E	2206A-E13TAG3	LSA47.2S4	1500	400.0	450.0	320.0	360.0
MP450-MP500E	2506A-E15TAG1	LSA47.2S5	1500	450.0	500.0	360.0	400.0
MP500-MP550E	2506A-E15TAG2	LSA47.2M7	1500	500.0	550.0	400.0	440.0
MP600-MP660E	2806A-E18TAG1A	LSA47.2L9	1500	600.0	660.0	480.0	528.0
MP650-MP700E	2806A-E18TAG2	LSA49.1S4 / LSA49.3S4	1500	650.0	700.0	520.0	560.0
MP750-MP825E	4006-23TAG2A	LSA49.1M75 / LSA49.3M8	1500	750.0	825.0	600.0	660.0
MP800-MP880E	4006-23TAG3A	LSA49.1M75 / LSA49.3M8	1500	800.0	880.0	640.0	704.0
MP1000-MP1100E	4008TAG2A	LSA49.1L11 / LSA49.3L10	1500	1000.0	1100.0	800.0	880.0
MP1250-MP1375E	4012-46TWG2A	LSA50.2M6	1500	1250.0	1375.0	1000.0	1100.0
MP1500-MP1650E	4012-46TAG2A	LSA50.2L8	1500	1500.0	1650.0	1200.0	1320.0
MP1700-MP1875E	4012-46TAG3A	LSA51.2S55 / LSA52.3S5	1500	1710.0	1880.0	1368.0	1504.0
MP2000-MP2250E	4016TAG2A	LSA51.2M60 / LSA52.3S6	1500	2000.0	2250.0	1600.0	1800.0
MP2250-MP2500E	4016-61TRG3	LSA51.2VL90 / LSA52.3L9	1500	2250.0	2500.0	1800.0	2000.0

### Rating Definitions:

**Prime:** These ratings are applicable for supplying continuous electrical power (at variable load) in lieu of commercially purchased power. 10% overload power is available for 1 hour in 12 hours continuous operation.

**Standby:** These ratings are applicable for supplying continuous electrical power (at variable load) in the event of utility power failure. No overload is permitted on these ratings.

**Note:** All ratings @ Factory Standard Conditions.

### Others

**Sound Attenuated Enclosures:** Developed by our special acoustic engineers and comply with the European Community regulations 2000/14/EC. The fully weatherproof enclosures are extremely rugged to withstand the rough handling common on many construction sites.

**Control Panels:** Digital & Auto Synchronization Panels.

**Automatic Load Transfer Panels:** Electronically controlled panel provides 24 hours automatic control of standby generating sets, 365 days a year.



**Generating Set Ratings**



**Perkins Powered - 3 Phase, 480 V, 60 Hz, Rating at 0.8 PF**

Generating Set	Perkins Engine Model	Leroy Somer Alternator Model	RPM	Rating			
				KVA		KW	
				Prime	Standby	Prime	Standby
JP15.5	403D-15G	LSA40VS2	1800	15.5	17.0	12.4	13.6
JP18	403A-15G2	LSA40S3	1800	18.0	20.0	14.4	16.0
JP24	404D-22G	LSA40M5	1800	24.0	27.0	19.2	21.6
JP35	1103A-33G	LSA42.3VS3	1800	35.0	38.0	28.0	30.4
JP53	1103A-33TG1	LSA42.3M7	1800	53.0	59.0	42.4	47.2
JP68	1103A-33TG2	LSA42.3L9	1800	68.0	75.0	54.4	60.0
JP91	1104A-44TG2	LSA44.3S3	1800	91.0	100.0	72.8	80.0
JP114	1104C-44TAG2	LSA44.3S5	1800	114.0	127.0	91.2	101.6
JP152	1106A-70TG1	LSA44.3M8	1800	152.0	169.0	121.6	135.2
JP169	1106A-70TAG2	LSA44.3L10	1800	169.0	188.0	135.2	150.4
JP197	1106A-70TAG3	LSA46.2M3	1800	197.0	219.0	157.6	175.2
JP248	1506A-E88TAG1	LSA46.2M5 / LSA46.3S3	1800	248.0	273.0	198.9	218.4
JP248	1506A-E88TAG2	LSA46.2L6 / LSA46.3S4	1800	248.0	273.0	198.9	218.4
JP290	1506A-E88TAG3	LSA46.2L6 / LSA46.3S4	1800	290.0	320.0	232.0	256.0
JP315	1506A-E88TAG4	LSA46.2L9 / LSA46.3S5	1800	315.0	346.0	252.0	276.8
JP352	1506A-E88TAG5	LSA46.2VL12 / LSA46.3M8	1800	352.0	389.0	281.6	311.2
JP400	2206A-E13TAG2	LSA47.2VS2 / LSA46.3L11	1800	400.0	438.0	320.0	350.4
JP438	2206A-E13TAG6	LSA47.2S4	1800	438.0	500.0	350.4	400.0
JP500	2506A-E15TAG1	LSA47.2M7 / LSA47.2S5	1800	500.0	563.0	400.0	450.4
JP625	2806A-E18TAG1A	LSA47.2L9	1800	625.0	687.0	500.0	549.6
JP681	2806A-E18TAG3	LSA49.1S4	1800	681.0	750.0	544.8	600.0
JP750	4006-23TAG2A	LSA49.1M6	1800	750.0	825.0	600.0	660.0
JP849	4006-23TAG3A	LSA49.1M75	1800	849.0	944.0	679.2	755.2
JP1000	4008TAG2	LSA49.1L11	1800	1000.0	1100.0	800.0	880.0
JP1253	4012-46TWG2A	LSA50.2M6	1800	1253.0	1385.0	1002.4	1108.0
JP1369	4012-46TAG1A	LSA50.2L7	1800	1369.0	1505.0	1095.2	1204.0
JP1510	4012-46TAG2A	LSA50.2L8	1800	1510.0	1661.0	1208.0	1328.8
JP1710	4012-46TAG3A	LSA51.2S55 / LSA52.3S5	1800	1710.0	1880.0	1368.0	1504.0

Specifications are subject to change without prior notice.

**Generating Set Ratings**



**Perkins Powered - 3 Phase, 480 V, 60 Hz, Rating at 0.8 PF**

Generating Set	Perkins Engine Model	Leroy Somer Alternator Model	RPM	Rating			
				KVA		KW	
				Prime	Standby	Prime	Standby
MP15.5-MP17E	403D-15G	LSA40VS2	1800	15.5	17.0	12.4	13.6
MP18-MP20E	403A-15G2	LSA40S3	1800	18.0	20.0	14.4	16.0
MP24-MP27E	404D-22G	LSA40M5	1800	24.0	27.0	19.2	21.6
MP35-MP38E	1103A-33G	LSA42.3VS3	1800	35.0	38.0	28.0	30.4
MP53-MP59E	1103A-33TG1	LSA42.3M7	1800	53.0	59.0	42.4	47.2
MP68-MP75E	1103A-33TG2	LSA42.3L9	1800	68.0	75.0	54.4	60.0
MP91-MP100E	1104A-44TG2	LSA44.3S3	1800	91.0	100.0	72.8	80.0
MP114-MP127E	1104C-44TAG2	LSA44.3S5	1800	114.0	127.0	91.2	101.6
MP152-MP169E	1106A-70TG1	LSA44.3M8	1800	152.0	169.0	121.6	135.2
MP197-MP219E	1106A-70TAG3	LSA46.2M3	1800	197.0	219.0	157.6	175.2
MP248-MP273E	1506A-E88TAG1	LSA46.2M5 / LSA46.3S3	1800	248.0	273.0	198.9	218.4
MP248-MP273E	1506A-E88TAG2	LSA46.2L6 / LSA46.3S4	1800	248.0	273.0	198.9	218.4
MP290-MP320E	1506A-E88TAG3	LSA46.2L6 / LSA46.3S4	1800	290.0	320.0	232.0	256.0
MP352-MP389E	1506A-E88TAG5	LSA46.2VL12 / LSA46.3M8	1800	352.0	389.0	281.6	311.2
MP400-MP438E	2206A-E13TAG2	LSA47.2VS2 / LSA46.3L11	1800	400.0	438.0	320.0	350.4
MP438-MP500E	2206A-E13TAG6	LSA47.2S4	1800	438.0	500.0	350.4	400.0
MP500-MP563E	2506A-E15TAG1	LSA47.2M7 / LSA47.2S5	1800	500.0	563.0	400.0	450.4
MP625-MP687E	2806A-E18TAG1A	LSA47.2L9	1800	625.0	687.0	500.0	549.6
MP681-MP750E	2806A-E18TAG3	LSA49.1S4	1800	681.0	750.0	544.8	600.0
MP750-MP825E	4006-23TAG2A	LSA49.1M6	1800	750.0	825.0	600.0	660.0
MP849-MP944E	4006-23TAG3A	LSA49.1M75	1800	849.0	944.0	679.2	755.2
MP1000-MP1100E	4008TAG2	LSA49.1L11	1800	1000.0	1100.0	800.0	880.0
MP1253-MP1385E	4012-46TWG2A	LSA50.2M6	1800	1253.0	1385.0	1002.4	1108.0
MP1510-MP1661E	4012-46TAG2A	LSA50.2L8	1800	1510.0	1661.0	1208.0	1328.8

Specifications are subject to change without prior notice.



## SOUND ATTENUATED & WEATHER PROTECTIVE ENCLOSURES

Customised enclosures for the Generating Sets provide sound attenuation and weather proofing. Our enclosures have a highly functional design that allows for accessibility and easy entry to the engine for maintenance operations. The careful design ensures the lowest noise level using high density sound absorbing material and highly effective aeration system. Our sound-attenuated and weather-protective enclosures are manufactured from galvanized steel sheet (polyester powder painted for rust proof protection.) The presence of heavy duty silencer ensures enhanced performance.

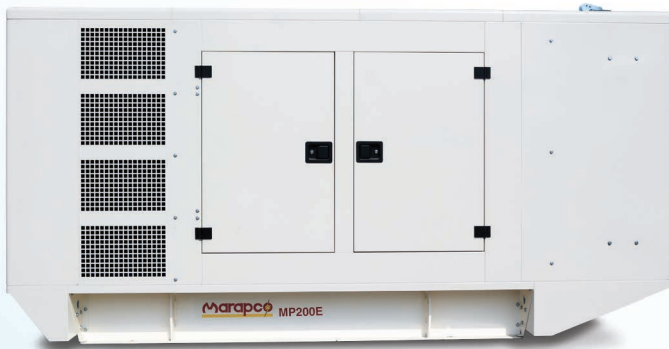
Genset Model	KVA	Length (mm)	Width (mm)	Height* (mm)	Weight** (kg)	Fuel Tank Capacity (Liters)
JP9	9-10	1910	860	1265	742	58
JP12.5	12.5-14	1910	860	1265	742	58
JP15	15-16.5	1910	860	1265	749	58
JP20	20-22	1910	860	1265	820	58
JP30	30-33	2120	970	1590	1082	154
JP45	45-50	2300	1110	1590	1246	191
JP60	60-66	2300	1110	1590	1335	191
JP80	80-88	2300	1110	1590	1441	191
JP100	100-110	2770	1110	1590	1625	234
JP135	135-150	3520	1110	1870	2294	234
JP150	150-165	3520	1110	1870	2353	234
JP180	180-200	3900	1110	1870	2310	234
JP200 (1106)	200-220	3900	1110	1870	2310	234
JP200	200-220	3900	1430	2020	2982	371
JP230	230-250	3900	1430	2020	2982	371
JP250	250-275	3900	1430	2020	2982	371
JP275	275-300	3900	1430	2020	2982	371
JP300	300-330	4700	1630	2020	3520	506
JP350	350-400	4900	1630	2190	4030	538
JP400	400-450	4900	1630	2190	4170	538
JP450	450-500	5190	1630	2190	4610	721
JP500	500-550	5190	1630	2190	4750	721
JP600	600-660	5885	1950	2275	5550	713
JP650	650-700	5885	1950	2275	5580	713

\*Excluding 100mm for the extension of the exhaust pipe and 10cm for center lifting point  
 \*\*Total for enclosure and genset

CTR Type	KVA	Length (mm)	Width (mm)	Height (mm)	Weight* (kg)
20' ISO	750-880	6000	2320	2600	2400
40' ISO High Cube	1000-2500	12000	2320	2900	4000

\*For container without Genset

SOUND LEVEL: 80-85 dBA @ 3 meters (Standard)



Genset Model	KVA	Length (mm)	Width (mm)	Height* (mm)	Weight** (kg)	Fuel Tank Capacity (Liters)
MP12.5 - MP14E	12.5-14	2070	900	1510	733	100
MP15 - MP16.5E	15-16.5	2070	900	1510	733	100
MP20 - MP22E	20-22	2070	900	1510	794	100
MP30 - MP33E	30-33	2260	1050	1620	1128	220
MP45 - MP50E	45-50	2600	1050	1620	1172	220
MP60 - MP66E	60-66	2600	1050	1620	1261	220
MP80 - MP88E	80-88	2770	1150	1660	1433	220
MP100 - MP110E	100-110	2770	1150	1660	1585	220
MP135 - MP150E	135-150	3370	1390	1830	1962	400
MP150 - MP165E	150-165	3370	1390	1830	2017	400
MP180 - MP200E	180-200	3630	1390	1830	2418	400
MP200 - MP220E (1106)	200-220	3630	1390	1830	2418	400
MP200	200-220	3900	1430	2060	2725	600
MP230 - MP250E	230-250	3900	1430	2060	2803	600
MP250 - MP275E	250-275	3900	1430	2060	2803	600
MP275 - MP300E	275-300	3900	1430	2060	2803	600
MP300 - MP330E	300-330	4700	1630	2060	3520	600
MP350 - MP400E	350-400	4900	1630	2250	4480	800
MP400 - MP450E	400-450	4900	1630	2250	4630	820
MP450 - MP500E	450-500	5190	1630	2250	5120	820
MP500 - MP550E	500-550	5190	1630	2250	5270	820
MP600 - MP660E	600-660	5880	1940	2380	6000	1250
MP650 - MP700E	650-700	5880	1940	2380	6150	1250

\*Excluding 100mm for the extension of the exhaust pipe and 10cm for center lifting point  
 \*\*Total for enclosure and genset

CTR Type	KVA	Length (mm)	Width (mm)	Height (mm)	Weight* (kg)
20' ISO	750-880	6000	2320	2600	2400
40' ISO High Cube	1000-2500	12000	2320	2900	4000

\*For container without Genset

SOUND LEVEL: 80-85 dBA @ 3 meters (Standard)

ABOVE TABULATED DATA ARE GIVEN AS A GENERAL REFERENCE, PLEASE CONSULT WITH YOUR LOCAL BRANCH FOR THE EXACT MODEL DIMENSIONS & SOUND LEVEL.



## MOBILE LIGHT TOWERS

Marapco Light Towers offer complete lighting solutions for a wide array of applications and are tested under harsh conditions to withstand the rough environments common on different sites. Marapco Light Towers combine quality and performance to deliver a superior product, making it a market leading lighting tower throughout the Middle East, Asia & Africa.



## SPARE PARTS AND ACCESSORIES

As a market leader of diesel electric power generators, Jubaili Bros' inventory of genuine spare parts is unsurpassed. We supply a complete range of high quality Perkins spare parts for diesel generators. Our computerized re-fill system enables us to regularly monitor our stock levels, ensuring we have the required spare parts to meet our customers' needs.



## ATS & SYNCHRONIZING SOLUTIONS

Jubaili Bros offers superior quality ATS (AUTOMATIC TRANSFER SWITCH) that automatically transfers load from Main power to emergency power without operator intervention. Our offering includes Socomec innovative power solutions as well. In addition, a wide range of synchronizing systems are professionally assembled as per customers' specific requirements and needs.



## CONTROL MODULES

Jubaili Bros offers DSE extensive range of generator controllers. These easy to use control modules have established an enviable reputation for delivering unrivalled functionality. Whether it's a simple Manual Start Control Module or a complex Synchronising Controller with Advanced PLC Functionality that is required, DSE have the right solutions and are consistently developing products that surpass customers' requirements and expectations.



## LOAD BANKS

Jubaili Bros resistive load banks feature Helidyne (TM) resistive elements. These elements are made of a corrosion resistant chromium alloy and are fully supported across their entire length on stainless steel support rods with segmented ceramic insulators. Elements are carefully selected to operate at low temperatures to provide extended, reliable performance, eliminating the need for a "cool down" period after load bank operation.



## ABB PRODUCTS

Our ABB Low Voltage Products range includes, but is not limited to:

- Automation Devices & Low Voltage Systems - IEC/NEMA
- Circuit Breakers, Modular DIN Rail Products
- Control Panels & Enclosures, Motors, Soft Starters & Drives
- Industrial Plugs & Sockets, Switches & Fuse - Gear
- Installation Products
- Terminal Blocks and many more...

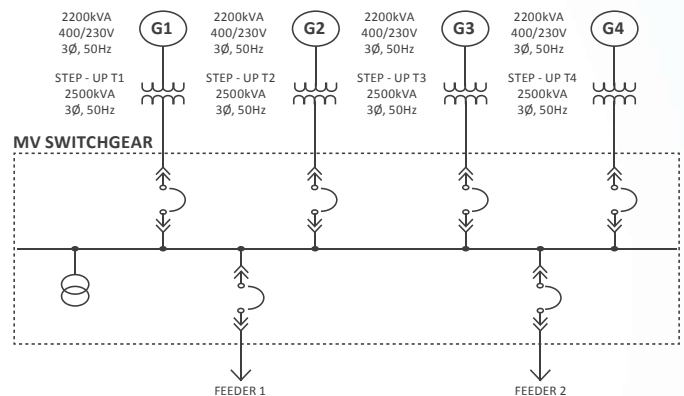




With over 700 highly trained engineers and technicians, Jubaili Bros prides itself in offering excellent after sales service. We have an extensive fleet of fully equipped service vehicles on call 24/7, ensuring our clients' businesses and residences experience minimal power outages in the event of an emergency. JB's customers can rest assured that their machines are maintained for optimum performance and maximum life cycle.

## POWER SOLUTIONS

WE PROUDLY OFFER A WIDE RANGE OF LOW & MEDIUM VOLTAGE PRODUCTS, TECHNICAL KNOW-HOW AND EXPERIENCE TO BRING YOUR PROJECTS TO LIFE



SINGLE LINE DIAGRAM

Built on a strong foundations of high business standards and superior quality products, Jubaili Bros prides itself in setting the standards for reliable and trust worthy solutions for special requirements. We are always ready to provide our customers with diverse and customized solutions to meet all electric power distribution and transmission needs; in a smart and safe manner.

### TURNKEY SOLUTIONS

- Supply equipment for LV and MV transmission and distribution
- Rehabilitation and upgrade of exiting systems
- Design and develop our own solutions to fit with customer needs

### MV PRODUCTS

THE EXTENSIVE OFFERINGS INCLUDE BUT ARE NOT LIMITED TO:

- Power & Distribution Transformers 50 - 5000 KVA up to 24 kV
- Ring Main Units
- Switchgears [Indoor & Outdoor with SCADA]
- Power Cables LV & MV
- Termination Kits [Commissioning and Installation]
- Metal and Concrete Poles
- Transmission Poles and Towers
- Overhead Conductors & Accessories [ACSR, ACCR, ABC]
- Switches, Disconnectors, Sectionalizers & Fused Cutouts
- Test & Measuring Equipments
- Energy Meters



# JUBAILI BROS IN GCC



## JUBAILI BROS KUWAIT

### KUWAIT FREE TRADE ZONE

T: +965 24610356 T: +965 24318547  
E: jbkwait@jubailibros.com



## JUBAILI BROS QATAR

### DOHA

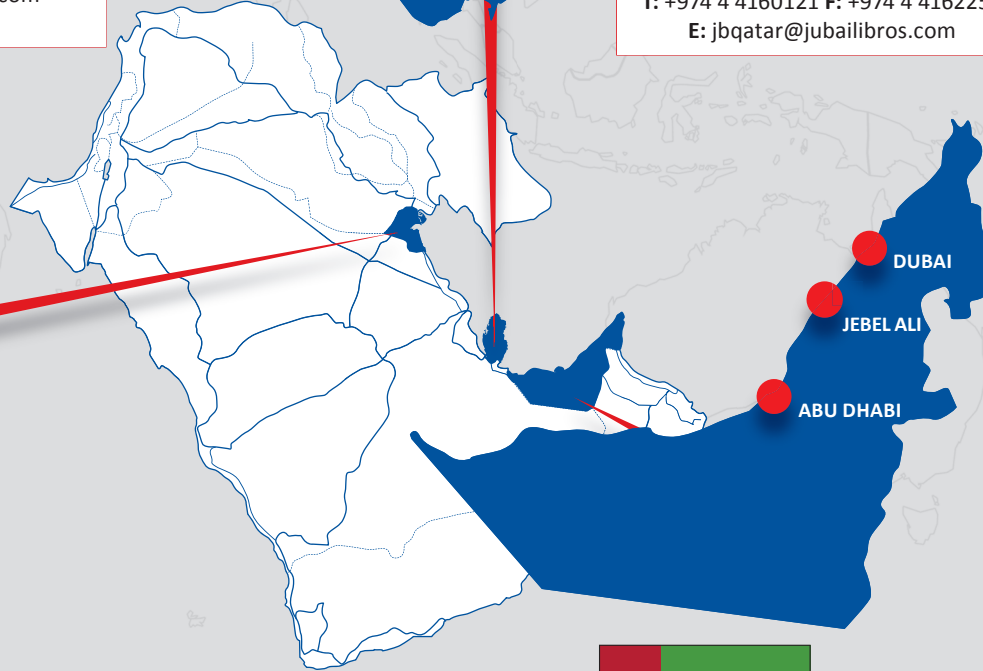
Al Jeryan-1 Bldg # 393, Gate 2  
1st Floor, Office No. F12, Salwa Road  
T: +974 4 4160121 F: +974 4 4162257  
E: jbqatar@jubailibros.com



KUWAIT



DOHA



DUBAI

JEBEL ALI

ABU DHABI



## JUBAILI BROS UAE

### ABU DHABI

Mussafah Industrial Area, Infront of  
Porsche showroom | P.O. Box 9310  
T: +971 2 5542966 F: +971 2 5541966  
E: jb.abudhabi@jubailibros.com

## JUBAILI BROS UAE

### DUBAI

Al Jaddaf Dry Docks Warehouse No. 80  
P.O. Box 16520  
T: +971 4 3242544 F: +971 4 3242545  
E: jbdubai@jubailibros.com

## JUBAILI BROS UAE - HEAD OFFICE

### JEBEL ALI FREE ZONE

Street No. 1241B Between R/A - 12 & 13  
P.O. Box 16520  
T: +971 4 8832023 F: +971 4 8832053  
E: jbdubai@jubailibros.com

## GLOBAL REACH

## LOCAL SUPPORT

LEBANON - (5 Branches)

### SAIDA - HEADQUARTER

Jubaili Building, Maarouf Saad Boulevard, P.O. Box 60, Saida  
T: +961 7 730871 F: +961 7 720813 E: jblebanon@jubailibros.com



GHANA

### ACCRA

Plot 43, Spintex Road, Behind Stanbic Bank, P.O. Box CT 6154  
T/F: +233 302 817700 E: jbgghana@jubailibros.com



NIGERIA - (6 Branches)

### IKEJA

Jubaili Building, Plot 2, Ikosi Road, Oregon, Ikeja, Lagos State  
T: +234 81 40 111 111 E: jb.ikeja@jubailibros.com



UGANDA

### KAMPALA

Plot 2-4, 7th Street Industrial Area, Oxford Station,  
Opp. National Housing Uganda Ltd.  
T: +256 776999920 / +256 779443360 E: jb.uganda@jubailibros.com



AFGHANISTAN - (8 Branches & Service Centers)

### KABUL

Yaka-Toot, Jalalabad Road  
T: +93 777753000 / 777752000 E: jbafg@jubailibros.com



SOUTH AFRICA

### JOHANNESBURG

Bedford Centre, Office Tower 502, 5th floor, Smith Road  
T: +27 11 100 4878 E: jb.sa@jubailibros.com

