



YOUR PARTNER IN POWER



ISO 9001:2008  
FM 56710

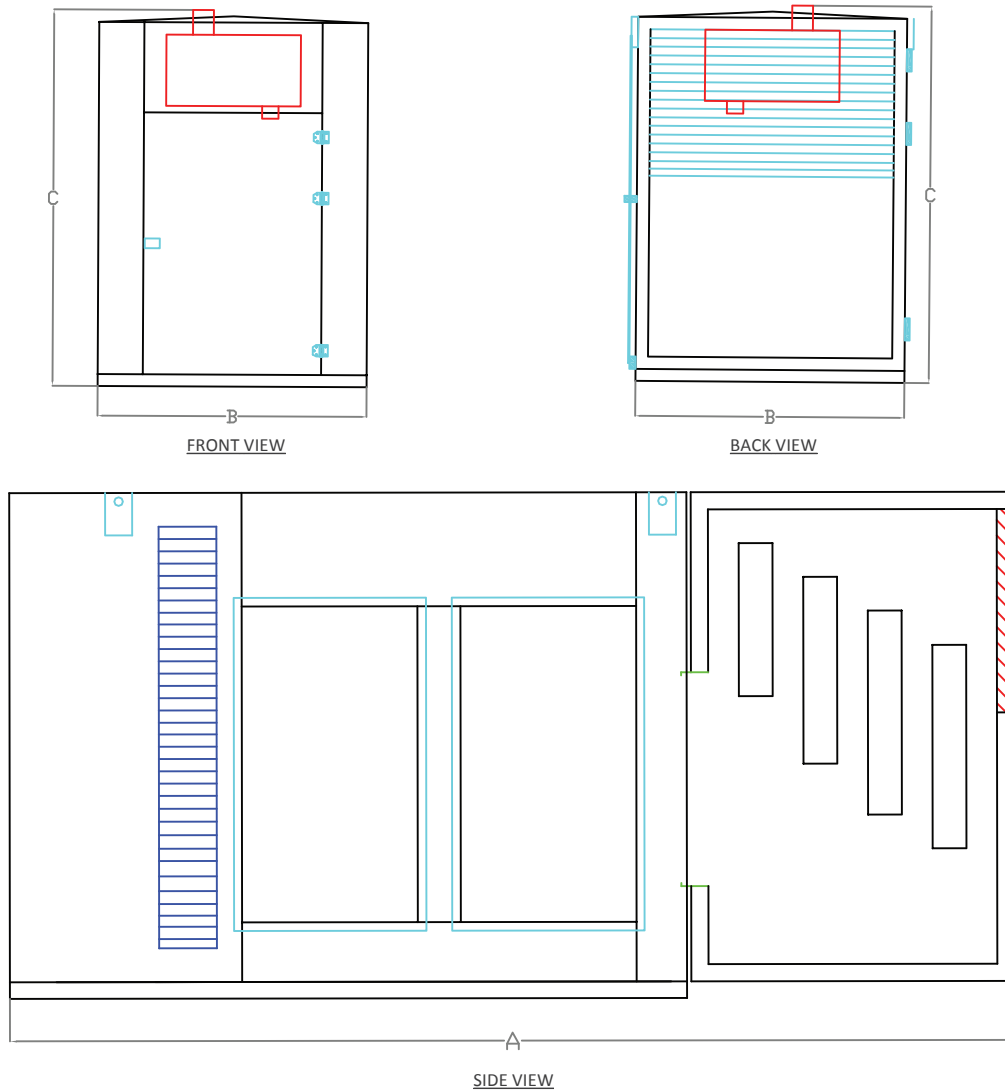
JET GENERATORS ARE ASSEMBLED  
IN FACILITIES CERTIFIED ISO 9001

**C10B Enclosures**

## C10B - TECHNICAL DATA

GENSET MODEL	TOTAL LENGTH TL (A)	TOTAL WIDTH TW (B)	TOTAL HEIGHT TH	WEIGHT kg	SOUND LEVELS - NO LOAD		SOUND LEVELS - 75% LOAD	
					1M	3M	1M	3M
<b>JP250</b> 1506 Series	460	175+10	250	2775	68	66	70	68
<b>JP300</b> 1506 Series	460	175+10	250	2775	68	66	70	68
<b>JP400</b>	592	220+10	310	3800	68	66	70	68
<b>JP500</b>	592	220+10	310	3800	68	67	71	68

\*\*Weight for enclosure only



## TECHNICAL SPECIFICATIONS

- Unique appearance with high sound absorbing and thermal properties
- Full weather proof enclosure and suitable operations in harsh conditions.
- Manufactured from galvanized metal sheet for doors & louvers.
- Heavy duty acoustical fireproof fiber used for general, thermal, and acoustic insulation, covered with galvanised perforated sheet for protection.
- Residential exhaust muffler to further decrease the sound level of the exhaust (mounted inside the enclosure up to 200 KVA as standard).
- Galvanized hinges & door locks / stainless steel door locks for 800 KVA as above.
- Polyurethane paint with resistant to sun radiations and various weather conditions.
- Internal emergency stop is standard with optional external emergency stop.
- Fully guarded cooling fan & battery charging alternator.
- Securely reachable fuel fill & battery via lockable access doors.
- Four lifting points for each set and 6 lifting points for 800 KVA & above for easy mobility.

All information in this document is substantially correct at time of printing and maybe altered subsequently.