

Simple

Prefabricated and pre-tested, no onsite internal cabling
Compact 20'HC container design for easy transportation



Efficiency

Eco-design Transformer Suitable for All
Lower Self-consumption for Higher Yields



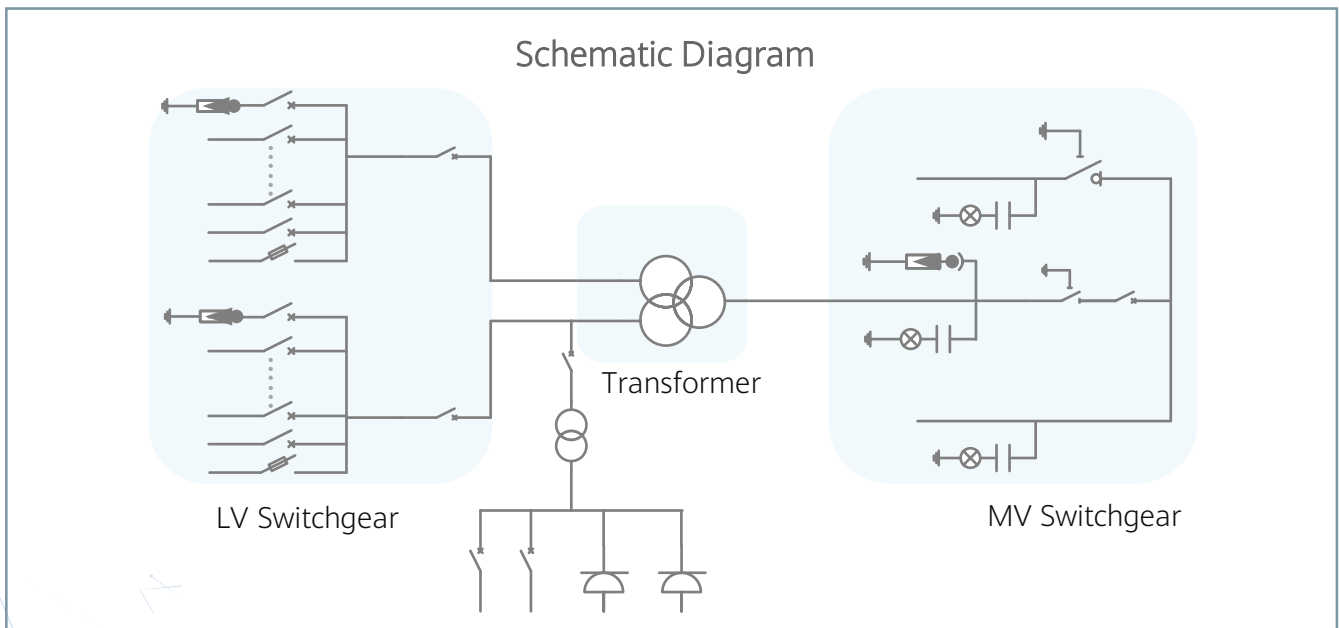
Smart

Real-time monitoring of transformer, LV and MV switchgear
0.2% high precision of electricity parameters collection
Remote control of ACB and MV Circuit Breaker



Reliable

Robust design against harsh environments
Innovative cooling design, easy maintenance
Comprehensive tests from components, device to solutions



STS-6000K-H1, Ecodesign Technical Specifications

Input						
Available Inverters	SUN2000-185KTL-H1					
AC Power	6,300 kVA @40°C / 5,400 kVA @50°C ¹					
Max. Inverters Quantity	36					
Rated Input Voltage	800 V					
Max. Input Current at Nominal Voltage	2 * 2428 A					
LV Panel Type	ACB (2500 A / 800 V / 3P, 2*1 pcs), MCCB (250 A / 800 V / 3P, 2*18 pcs)					
Output						
Rated Output Voltage	10 kV	22 kV	30 kV	33 kV	34.5 kV	35 kV
Frequency	50 Hz	50 Hz	50 Hz	50 Hz	60 Hz	50 Hz
Transformer Type	Oil-immersed, Conservator Type					
Tappings	± 2 x 2.5%					
Transformer Oil Type	Mineral Oil					
Transformer Vector Group	Dy11-y11					
Minimum Peak Efficiency Index	In accordance with EN 50588-1					
Transformer Load Losses	49.7 kW	49.7 kW	49.7 kW	49.7 kW	41 kW	49.7 kW
Transformer No-load Losses	4.8 kW	4.8 kW	4.8 kW	4.8 kW	5.8 kW	4.8 kW
Impedance	7.5% (0 ~ +10%) @6300 kVA					
MV Switchgear Type	SF6 Gas Insulated, 3 Feeders					
Auxiliary Transformer	5 kVA, Dyn11, Ratio Varies according to Customization					
Protection						
Protection Degree of MV & LV Room	IP 54					
Internal Arcing Fault MV Switchgear	IAC A 20 kA 1s					
LV SPD	Type I + II					
General						
Dimensions (W x H x D)	6,058 x 2,896 x 2,438 mm (20' HC Container)					
Weight	< 22 t					
Operating Temperature Range	-25°C ~ 60°C ² (-13°F ~ 140°F)					
Relative Humidity	0% ~ 95%					
Max. Operating Altitude	2000 m	2000 m	2000 m	2000 m	2500 m	2000 m
Applicable Standards	IEC 60076, IEC 62271-200, IEC 62271-202, EN 50588-1, IEC 61439-1					
Features						
Auxiliary Transformer(50 kVA, Dyn11)	Optional ³ , Ratio Varies according to Customization					
1.5 kVA UPS	Optional ³					
Updated to CVC or CCV MV Switchgear	Optional ³					
IMD	Optional ³					
STS Interlocking	Optional ³					

- 1 - More detailed AC power of STS, please refer to the de-rating curve.
 2 - When ambient temperature ≥55°C, awning shall be equipped for STS on site by customer.
 3 - Extra expense needed for optional features which standard product doesn't contain.